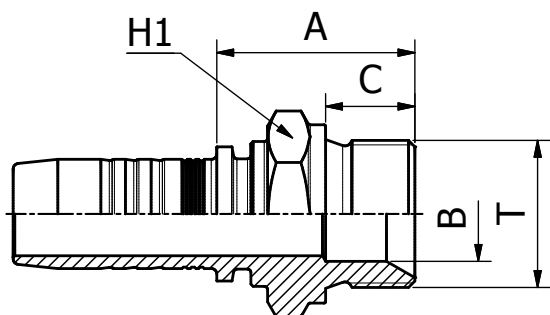


BS STANDARD CONNECTIONS

M10510



**BSP MALE PARALLEL 60° CONE SEAT
BS5200 / ISO 8434-6**

FITTINGS 116

PART. REF.	HOSE BORE			Thread	DIMENSIONS mm						
	DN	Dash	inch		T	B	A	C	H1		
M10510-03-02	5	- 3	3/16"	1/8" - 28		3.5	22.5	10.0	14.0		
M10510-03-04	5	- 3	3/16"	1/4" - 19		5.0	25.0	11.0	19.0		
M10510-04-02	6	- 4	1/4"	1/8" - 28		3.5	22.5	10.0	14.0		
M10510-04-04	6	- 4	1/4"	1/4" - 19		5.0	25.5	11.0	19.0		
M10510-04-06	6	- 4	1/4"	3/8" - 19		8.0	27.0	12.0	22.0		
M10510-04-08	6	- 4	1/4"	1/2" - 14		11.0	30.0	14.0	27.0		
M10510-05-04	8	- 5	5/16"	1/4" - 19		5.0	26.0	11.0	19.0		
M10510-05-06	8	- 5	5/16"	3/8" - 19		8.0	27.5	12.0	22.0		
M10510-06-04	10	- 6	3/8"	1/4" - 19		5.0	26.0	11.0	19.0		
M10510-06-06	10	- 6	3/8"	3/8" - 19		8.0	28.0	12.0	22.0		
M10510-06-08	10	- 6	3/8"	1/2" - 14		11.0	30.5	14.0	27.0		
M10510-08-06	12	- 8	1/2"	3/8" - 19		8.0	28.0	12.0	22.0		
M10510-08-08	12	- 8	1/2"	1/2" - 14		11.0	31.0	14.0	27.0		
M10510-08-10	12	- 8	1/2"	5/8" - 14		14.5	33.0	16.0	30.0		
M10510-08-12	12	- 8	1/2"	3/4" - 14		17.0	34.0	16.0	32.0		
M10510-10-10	16	- 10	5/8"	5/8" - 14		14.5	33.0	16.0	30.0		
M10510-10-12	16	- 10	5/8"	3/4" - 14		17.0	35.5	16.0	32.0		
M10510-12-08	19	- 12	3/4"	1/2" - 14		11.0	32.0	14.0	27.0		
M10510-12-12	19	- 12	3/4"	3/4" - 14		17.0	35.5	16.0	32.0		
M10510-12-16	19	- 12	3/4"	1" - 11		22.5	39.5	19.0	41.0		
M10510-16-12	25	- 16	1"	3/4" - 14		17.0	36.5	16.0	32.0		
M10510-16-16	25	- 16	1"	1" - 11		22.5	41.0	19.0	41.0		
M10510-16-20	25	- 16	1"	1.1/4" - 11		28.5	45.0	20.0	50.0		
M10510-20-20	31	- 20	1.1/4"	1.1/4" - 11		28.5	46.5	20.0	50.0		
M10510-20-24	31	- 20	1.1/4"	1.1/2" - 11		33.5	48.5	22.0	55.0		
M10510-24-24	38	- 24	1.1/2"	1.1/2" - 11		33.5	49.5	22.0	55.0		
M10510-32-32	51	- 32	2"	2" - 11		46.0	54.0	25.0	70.0		